

# Strengthening the AI, Big Data & Analytics *Ecosystem @ WSU*

Ratna Babu Chinnam, Ph.D. & Patrick Gossman, Ph.D.

[Ratna.Chinnam@wayne.edu](mailto:Ratna.Chinnam@wayne.edu) | [Patrick.Gossman@wayne.edu](mailto:Patrick.Gossman@wayne.edu)

Champion: Dr. Keith Whitfield, Provost

2<sup>nd</sup> Annual AI, Big Data & Analytics Town Hall Meeting with the Provost | Nov 4, 2019

# Program

2<sup>nd</sup> Annual AI, Big Data & Analytics Town Hall  
Meeting with the Provost | Nov 4, 2019

3:00PM	<b>Welcome Remarks: Provost K. Whitfield</b>					
3:05PM	<b>Ecosystem Vision &amp; Progress: Prof. R.B. Chinnam, Director, AI, Big Data &amp; Business Analytics Group</b> - Mission, Education, Research, Engagement, Services					
3:15PM	<b>Big Data Computing Facilities: Daren Hubbard, Associate VP &amp; CIO</b> - Grid, Web-Based Computing, Storage, Hadoop/Spark Cluster, VMs, National/External Resources					
3:20PM	<b>TED Style Talks from WSU Faculty:</b>					
	<b>Prof. Carol Miller</b> Director, Healthy Urban Waters, Civil & Environmental Engineering		<b>Prof. Jukka Savolainen</b> Past Director, National Archival of Criminal Justice Data, Criminal Justice		<b>Prof. Phil Levy</b> Assistant VP & Associate Chair for Research, Emergency Medicine	
4:15PM	<b>Open Discussion: What are your needs?</b>					
4:40PM	<b>Reception &amp; Posters</b>					

# Vision for WSU's AI, Big Data & Analytics Ecosystem

2<sup>nd</sup> Annual AI, Big Data & Analytics Town Hall  
Meeting with the Provost | Nov 4, 2019

## VISION:

*"To be a premier center of innovation  
in AI, big data science and analytics"*

## OPERATING PHILOSOPHY:

- Be a leading source of **data science and analytics expertise**
- **Leverage and reinforce strengths of diverse groups** across the university for synergistic collaborations that enable pursuit of **large research grants** and foster breakthroughs.
- Offer **leading edge educational and training programs**
- Actively **collaborate with industry** utilizing advanced research in computing tools and platforms
- Contribute to **development** of the broader **SE-Michigan community** through collaborative activities
- **Enhance university image and reputation**

# Leadership & Steering Committees

2<sup>nd</sup> Annual AI, Big Data & Analytics Town Hall  
Meeting with the Provost | Nov 4, 2019

## Steering Committee

- K. Whitfield, Provost
- S. Lanier, OVPR
- F. Fotouhi, Engineering
- L. Hazlett, SoM
- S. Hartwell, CLAS
- R. Forsythe, Business
- D. Hubbard, C&IT
- H.A. Coates, Development

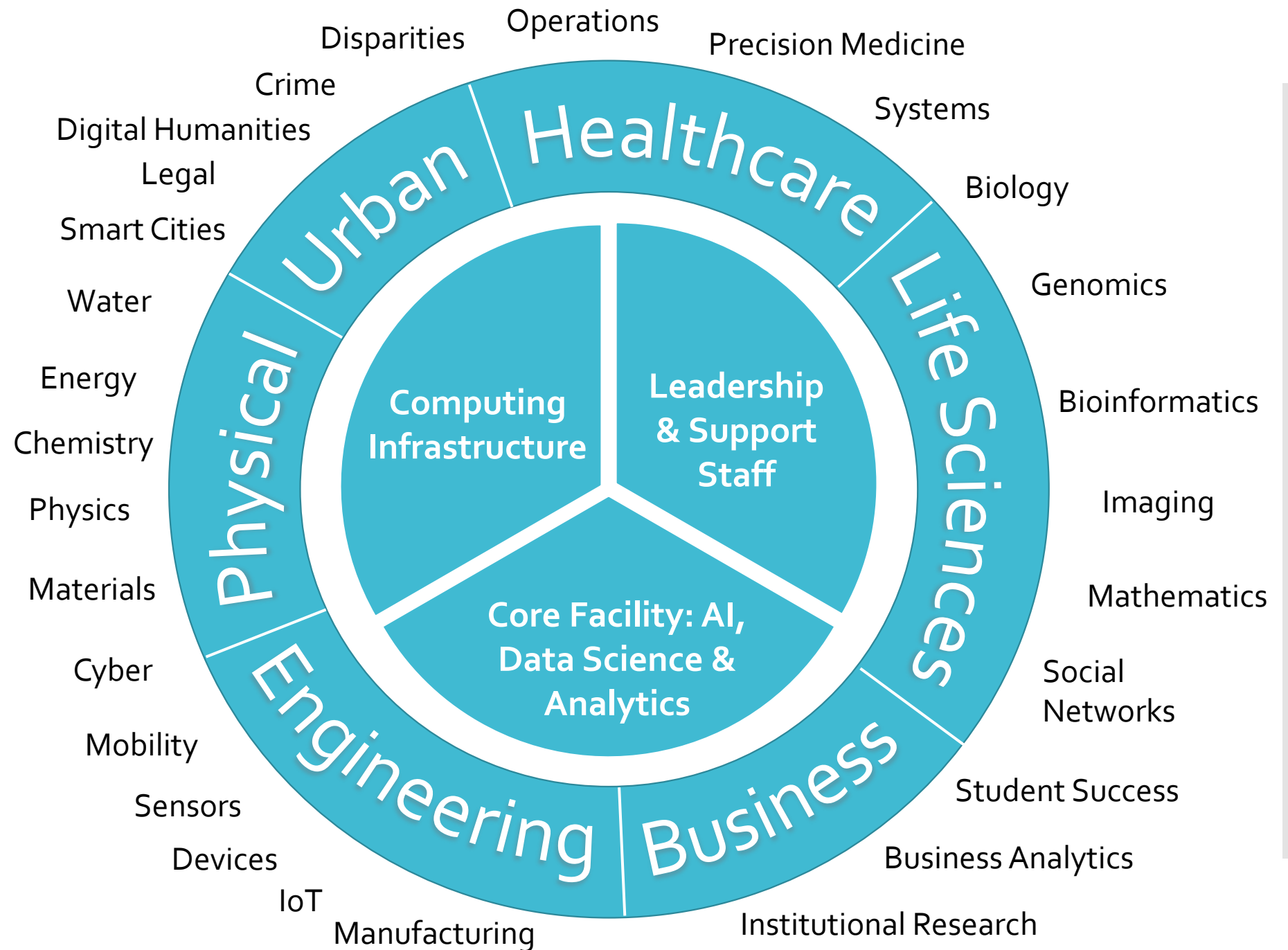
## Ecosystem Directors

- R. Chinnam, Engineering
- D. Cinabro, CLAS
- M. Dong, Engineering
- S. Draghici, Engineering & SoM
- P. Gossman, C&IT
- P. Levy, SoM / OVPR
- T. Somers, Business
- L. Thompson, CUS

# Proposed AI, Big Data *Ecosystem* Organizational Structure @ WSU

2<sup>nd</sup> Annual AI, Big Data & Analytics Town Hall  
Meeting with the Provost | Nov 4, 2019

AI, Big Data & Analytics Ecosystem @ WSU



# Accomplished

- AI, Big Data & Analytics Group
  - Annual Big Data Summits since 2014
    - ~500 Registrations from ~150 companies in recent years
  - M.S. in Data Science & Business Analytics
  - New Website: <http://bigdata.wayne.edu>
  - Group List-serve: [bigdata@lists.wayne.edu](mailto:bigdata@lists.wayne.edu)
- Enhanced Computing Infrastructure & Staff
  - Hadoop/Spark Cluster, VMs, Web-Based Computing
  - NSF Grants to Strengthen the Grid & GPU Computing
- NSF's [Midwest Big Data Hub](#)
  - WSU Leads “Business Analytics” Spoke

2<sup>nd</sup> Annual AI, Big Data & Analytics Town Hall  
Meeting with the Provost | Nov 4, 2019

# Accomplished

2<sup>nd</sup> Annual AI, Big Data & Analytics Town Hall  
Meeting with the Provost | Nov 4, 2019

## Big Data Interdisciplinary Research Stimulus Grants

- Funding from the Provost
- Received 20 proposals and 4 were funded
- Priority given to proposals that sought cross-college collaborations and new collaborations

P.I.	P.I. Affiliation	Co-P.I.s	Co-P.I. Dept. / College	Title
Yanchao Liu	Industrial & Systems Engineering, <b>Engineering</b>	Ratna Babu Chinnam Daniel Grosu Michael Belzer Stephen Remias Carolyn Loh Dimitar Filev Tom Bruff Erika Linenfelser Jesse Holzer	Industrial & Systems Engineering Computer Science, Engineering Economics, College of Liberal Arts & Science Civil and Environmental Engineering Urban Studies and Planning Ford Motor Company SEMCOG Planner, City of Detroit Pacific Northwest National Laboratory	Developing Data-Driven Decision Support Systems for Fostering Extreme-Scale <b>Smart Urban Mobility Networks</b> that Include Autonomous Vehicles
Amar Basu	Electrical & Computer Engineering, <b>Engineering</b>	Sreenivasa Chinni	School of Medicine	<b>Cancer Diagnostics by Liquid Biopsy</b> Enabled by High Speed Imaging Cytometry and Machine Learning
Leah Ketcheson	<b>College of Education</b>	Shiyong Lu Xiangmin Zhang Deborah Charbonneau	Dept. of Computer Science, Engineering School of Information Sciences School of Information Sciences	Leveraging Big Data to Investigate <b>Health Disparities among Children</b> with Autism Spectrum Disorders
Cheng Wang	Sociology, <b>CLAS</b>	Richard J. Smith Shawn P. McElmurry Paul E. Kilgore	School of Social Work Civil & Environmental Engineering Department of Pharmacy Practice	A Data Science Approach for Integrating Social Media, Population, and Administrative Data to <b>Reduce Health Disparities</b>



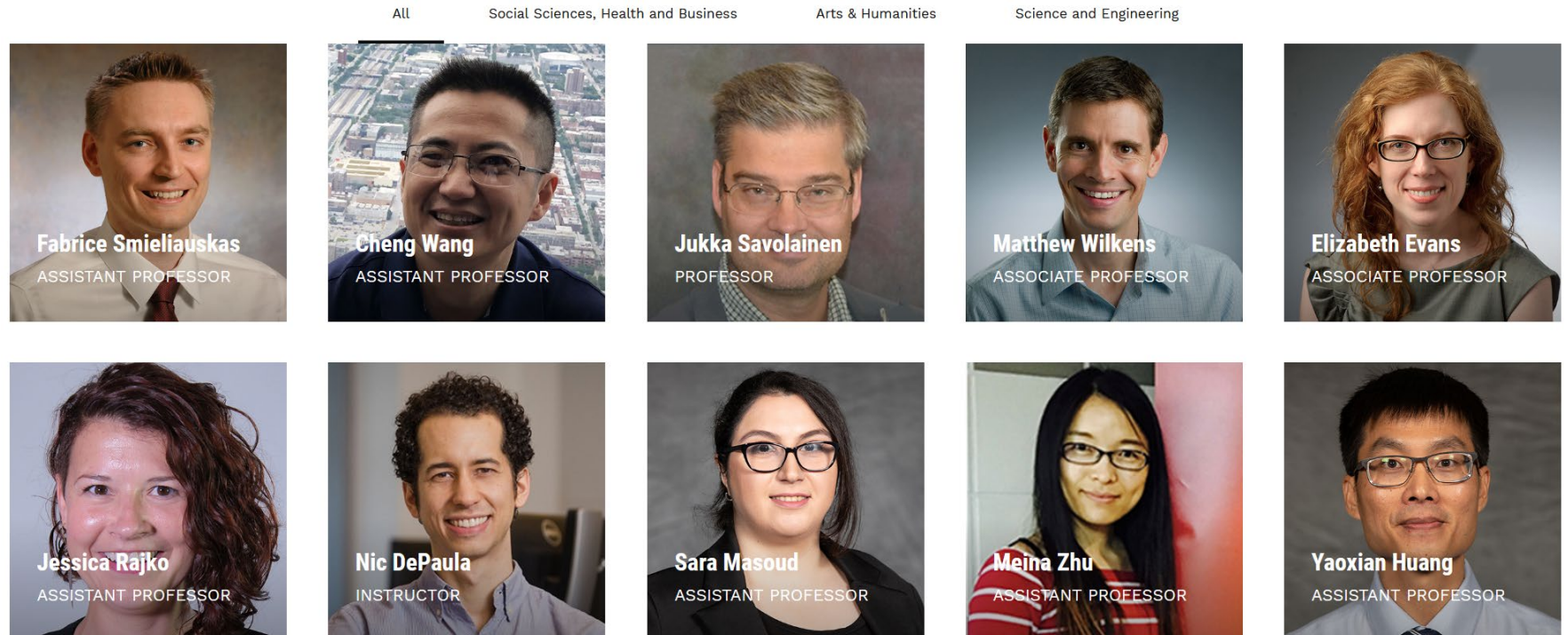
# Accomplished

2<sup>nd</sup> Annual AI, Big Data & Analytics Town Hall  
Meeting with the Provost | Nov 4, 2019

AI, Big Data & Analytics Ecosystem @ WSU

## Big Data Interdisciplinary Faculty

- Call for interdisciplinary hiring proposals led to > 40 submissions
- The area that attracted the most interest was Big Data
- Three search committees: Social sciences, health and business; Arts and humanities; & Science and engineering.
- Received > 400 applications in total
- Selected 10 exceptionally strong candidates





Accomplished

2<sup>nd</sup> Annual AI, Big Data & Analytics Town Hall Meeting with the Provost | Nov 4, 2019

AI, Big Data & Analytics Ecosystem @ WSU

# AI, Big Data & Analytics Group Website



AI, BIG DATA, &  
ANALYTICS GROUP



Telephone  
+13135774846



Email Address  
bigdata@wayne.edu



Big Data Research Lab  
4815 Fourth Street, #2011, Detroit, MI

HOME

ABOUT

MEMBERS

ENGAGEMENT

EDUCATION

EVENTS

SERVICES

CONTACT

NEWS & FEED

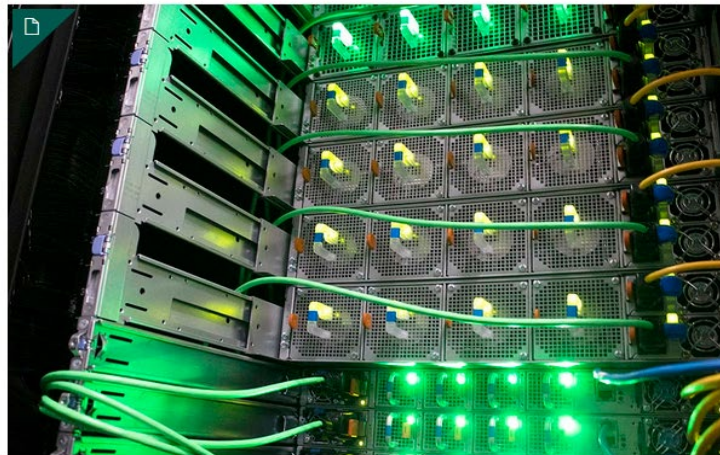


BY BIGDATAGROUP | OCTOBER 26, 2019

## 2nd Annual Big Data & Analytics Town Hall Meeting with the Provost on Nov 4th

Strengthening the AI, Big Data and Analytics Ecosystem @ WSU Nov. 4, 3-5 p.m.  
(Location: Lear Auditorium, Mike Ilitch School of B...

0



BY BIGDATAGROUP | JUNE 3, 2019

## C&IT begins move into new state-of-the-art data center

### COLLABORATION FEED

Academica

MEMBERSHIP - INVITE -

MY FREQUENT LINKS

RESOURCES

BIG DATA RESEARCH

This stream has 7 subscribers.  
A stream for collaborating on big data research

Keywords: big data - artificial intelligence - data mining

BIG DATA RESEARCH SUBSCRIBERS

ORGANIZATIONS

PEOPLE

ROLES

SUBSCRIBED STREAMS

ACADEMICA PORTAL

ALL ACTIVITY

NEW POST



DIVORCEAI, COLLEGE OF  
ENGINEERING STARTUP, SELECTED  
BY FORBES

Ratna Chinnam in Big Data Research  
Nov 01

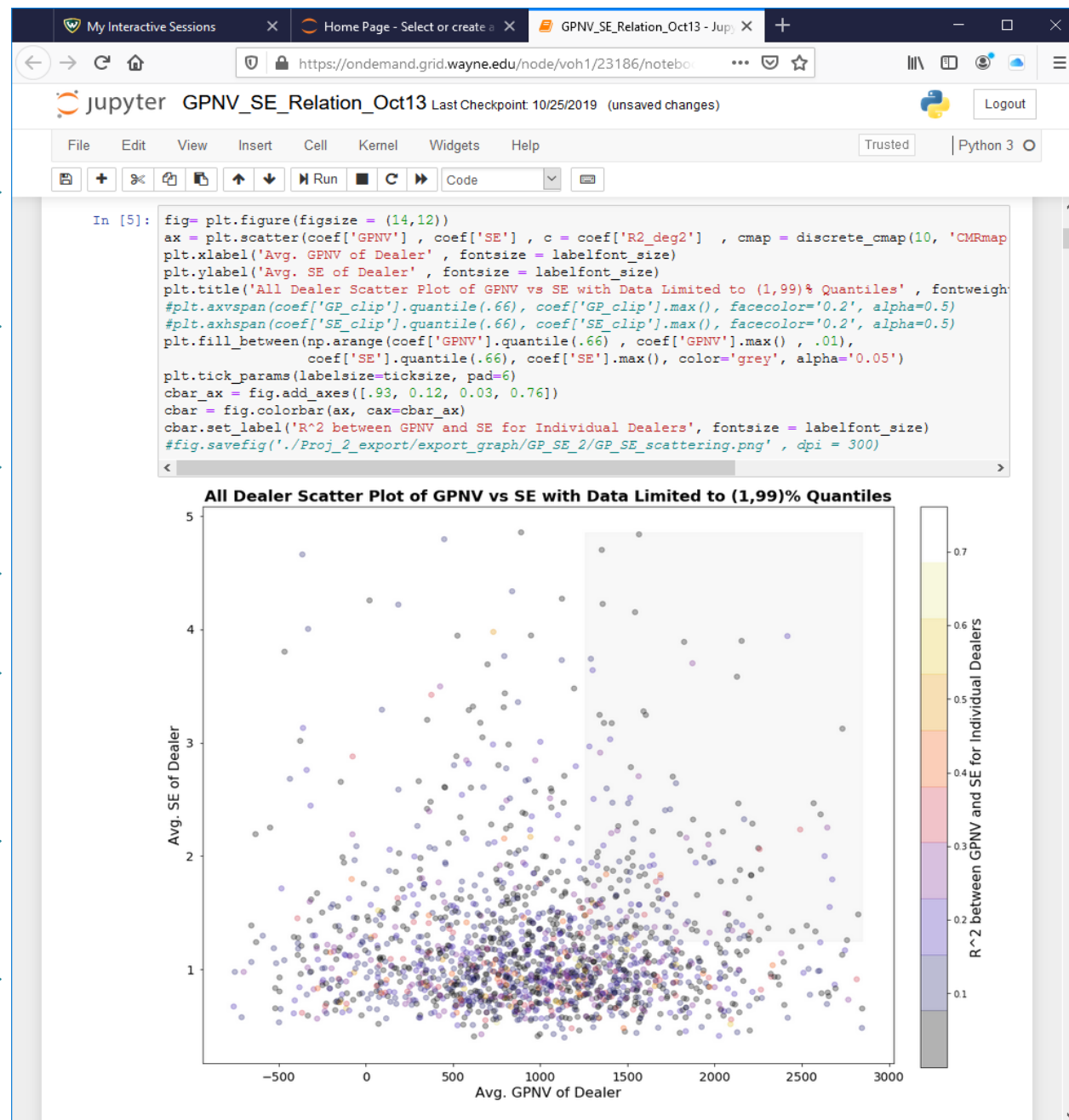
DivorceAI, one of the College of Engineering startups

# On-Demand Web Based Access to Grid Computing

## Example: Jupyter Notebooks for Python & R with GPUs

2<sup>nd</sup> Annual AI, Big Data & Analytics Town Hall Meeting with the Provost | Nov 4, 2019

- Visit OnDemand [Website](https://ondemand.grid.wayne.edu)
- Select Interactive Apps
- Specify Compute Requirements
- Launch
- Session Ready in Minutes
- Upload necessary code/data
- Compute away!



# Action Plan

- Increase Research Synergies & Engagement
  - Monthly Brownbag Lunch Group Meetings and More
- Establish AI & Big Data Science Core Facility
  - Fund Critical Staff: Two Data Engineers, Faculty Time, GSAs, Program Manager / Administrative Assistant
- Education & Training Programs
  - Planning a menu of 1-credit courses on topics that will be of broad interest across the university
  - Planning Training Workshops (1 or 2 Days):
    - Data Science 101                      Machine/Deep Learning
    - Visual Analytics                      Advanced Analytics
    - Distributed Computing              Big Data Management
- Start Building Partnerships & Grow the Ecosystem
  - Private Sector / Government / Non-Profits / Others ...
    - Membership, Investments ...
  - Examples:
    - SOSCIP (Southern Ontario Smart Computing Innovation Platform)
    - IHBI - Central Michigan University (Primary Sponsor: Dow)



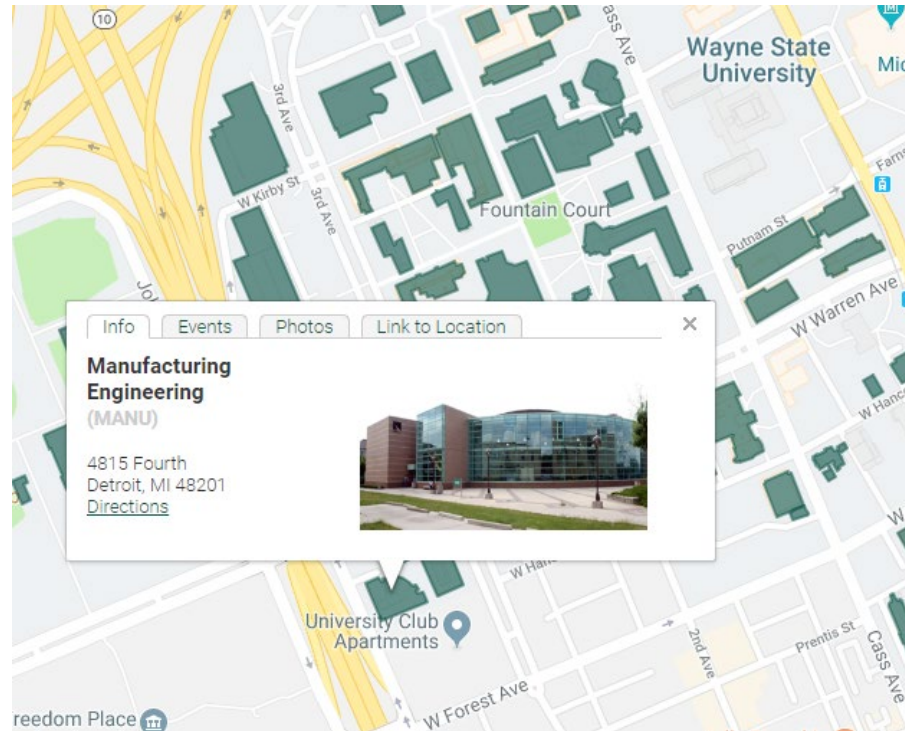
# Manufacturing Engineering Building

## 2<sup>nd</sup> Floor – Room 2011

### *AI, Big Data & Analytics Lab*

- Meeting Space
- Tutoring Space
- Student Research Workstations

2<sup>nd</sup> Annual AI, Big Data & Analytics Town Hall Meeting with the Provost | Nov 4, 2019



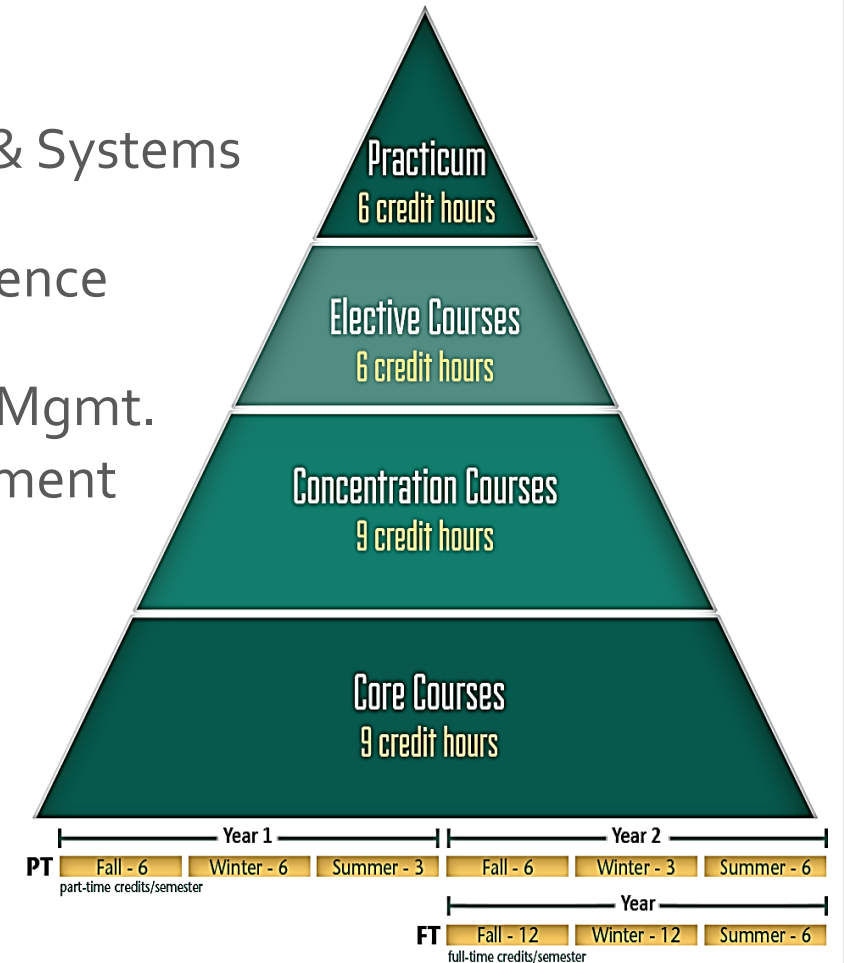
- Volunteer Faculty & GSAs
- Conference Area for 6-8 People
- (7) Student Workstations
- Equipment for Online Meetings, Glass Dry Erase Boards



# Data Science & Business Analytics MS Program

2<sup>nd</sup> Annual AI, Big Data & Analytics Town Hall  
Meeting with the Provost | Nov 4, 2019

- **Colleges Housing Program:**
  - College of Engineering
  - Mike Ilitch School of Business
  - College of Liberal Arts & Sciences
- **Four Synergistic Tracks:**
  - **Advanced Analytics** – Industrial & Systems Engineering Department
  - **Data Computing** – Computer Science Department
  - **Data-Driven Business** – Inf. Sys. Mgmt.
  - **Statistics** – Mathematics Department
- **Inception Date:** Fall 2017
- **Applications To Date:** > 400
- **Enrollment:** ~90 Students
- **Coursework:**
  - Available to non-DSBA majors
- **Website:** [engineering.wayne.edu/data-analytics/](http://engineering.wayne.edu/data-analytics/)



# MS DSBA Practicum Projects

2<sup>nd</sup> Annual AI, Big Data & Analytics Town Hall  
Meeting with the Provost | Nov 4, 2019

AI, Big Data & Analytics Ecosystem @ WSU

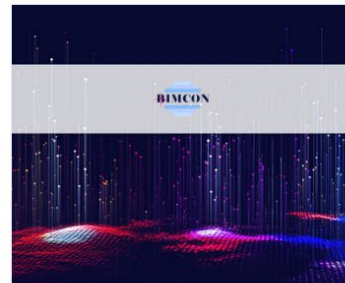
## Sample Industry Sponsored Practicum Projects

- Teams of 4 to 6 students from across program tracks
- \$10k / project: Immediate impact, Recruitment



### PRACTICUM PROJECTS **PEAKER SERVICES, INC.**

Novelty Detection and  
Autonomous Monitoring of  
Locomotives



### PRACTICUM PROJECTS **BIMCON, INC.**

Vehicle Content  
Identification via Deep  
Learning Vision Technology



### PRACTICUM PROJECTS **ATCO INDUSTRIES, INC.**

Vision System for  
Automated Compliance  
Evaluation of Production  
Part Features



### PRACTICUM PROJECTS **QUICKEN LOANS**

Clickstream data analysis



### PRACTICUM PROJECTS **WAYNE STATE UNIVERSITY – ENROLLMENT**

Student Yield & Success



### PRACTICUM PROJECTS **WAYNE STATE UNIVERSITY – ADMISSIONS**

Student Momentum  
Pathway – Admissions to  
Success



### PRACTICUM PROJECTS **SOFTURA**

Analytics Aided Case  
Management



### PRACTICUM PROJECTS **SIEMENS PLM**

Sales Prediction Project



# Planning Short & Modular Courses: 1-Credit

2<sup>nd</sup> Annual AI, Big Data & Analytics Town Hall  
Meeting with the Provost | Nov 4, 2019

## Examples

- Big Data Essentials: HDFS, MapReduce and Spark (see Coursera [Example](#) – Course 1)
- Big Data Integration & Processing (see UC San Diego Coursera [Example](#) – Course 3)
- Getting and Cleaning Data (see Johns Hopkins Coursera [Example](#) – Course 3)
- Introduction to Data Science in Python (see UoM Coursera [Example](#) – Course 1)
- Data Visualization in Python / R / Tableau (see UoM Coursera [Example](#) – Course 2; UC Davis Coursera [Example](#) – Several Courses)
- Business Intelligence Concepts, Tools, Applications (see U. of Colorado Coursera [Example](#) – Course 4)
- Applied Statistics with R (see UoM Coursera [Example](#) – Course 5)
- Applied Machine Learning in Python (see UoM Coursera [Example](#) – Course 3)
- Applied Machine Learning with Big Data (see UC San Diego Coursera [Example](#) – Course 4)
- Applied Deep Learning (see Coursera [Examples](#) by Andrew Ng)
- Applied Text Mining in Python (see UoM Coursera [Example](#) – Course 4)
- Applied Social Network Analysis in Python (see UoM Coursera [Example](#) – Course 5)
- Applied Graph Analytics for Big Data (see UC San Diego Coursera [Example](#) – Course 5)

*Survey to be sent out soon!*



## *Support for Other Units*

Research  
Design &  
Analysis (RDA)

Biostatistics  
Core  
(BERD)

Statistical  
Consulting  
(MATH)

AI, Big Data & Analytics Core  
(Big Data, AI / Machine Learning,  
Analytics, Training, Consulting)

Computing Infrastructure  
Hardware, Software and System Staff  
(C&IT and Colleges)

2<sup>nd</sup> Annual AI, Big Data & Analytics Town Hall  
Meeting with the Provost | Nov 4, 2019

# 1<sup>st</sup> Big Data Brown Bag Lunch & Learn Meeting

December 5<sup>th</sup>, 11AM-1PM  
Community Room at UGL



# Thank you!

Ratna Babu Chinnam, Ph.D.

Co-Director, AI, Big Data & Analytics Group

Ratna.Chinnam@wayne.edu

<http://bigdata.wayne.edu> | [bigdata@wayne.edu](mailto:bigdata@wayne.edu)

2<sup>nd</sup> Annual AI, Big Data & Analytics Town Hall  
Meeting with the Provost | Nov 4, 2019